

Painting of the Abbey of Valloires before reconstruction - 1735

Project

Association de Valloires

History: In 1137 Count Guy II of Ponthieu authorized monks from the Cistercian Abbey of Citeaux, to settle in the valley of Authie then definitely Valloires in 1158. The first church was consecrated in 1226 . The abbey has been rebuilt from 1742 to 1756.

Abbaye de Valloires has gone through tough times with ongoing wars; Kingdoms of England, Spain, religious wars and the French Revolution.

The abbey was sold on July 7, 1791 to a local landlord, Jourdain de l' Eloge who by its prevention saved the abbey from looting and destruction.

The abbey was sold again by his heirs in 1817 to a secular congregation, the Basilians, present until 1880. They are then replaced by the Society of St. Vincent de Paul who set up an agricultural orphanage. The abbey is again sold in 1905 then occupied during WWI as a Belgium hospital.

The abbey was occupied during WWII by the Germans, Marshall Rommel wanted to use it as a general headquarter.

Living History.

In 1922 Thérèse Papillon a French Red-Cross nurse , bought the abbey and founded the Association de Valloires.

The association is recognized as a non profit charity organization on June 10, 1925. The association is the sole owner of the abbey and its amenities. The association is dedicated to foster children

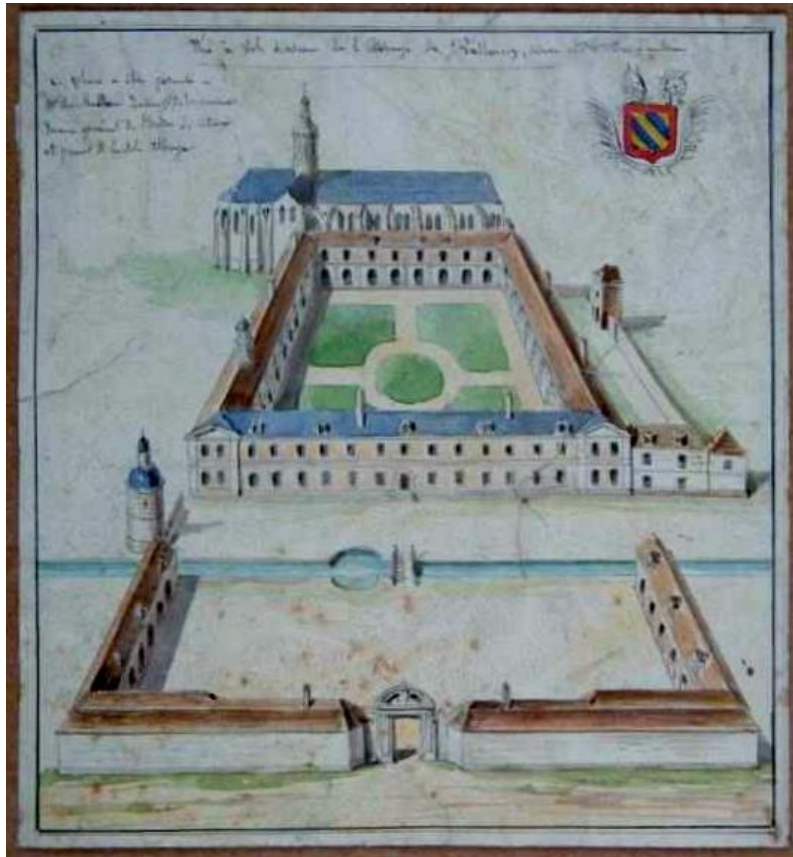
The Abbey has fostered well over 18,500 children since 1922.

In addition, the association has developed a service center for the elderly (nursing homes,)

To keep and maintain the abbey, the association has developed cultural and hotel services.

Milestones:

- Purchase in 1922
- Installation of running water in 1925
- Installation of electricity in 1928
- Installation of a central heating in 1929



Side view of the Abbey de Valloires



Rear view of the Abbey de Valloires



Abbaye de Valloires -East facade with roofing to be replaced.

SCOPE OF WORK

The work focuses on the **roof of the east facade.**

This project requires significant financial and technical resources. The roof has never been changed since the eighteenth century. Adjustments were 'built' in 1922 in the attic (*Building -Tranche 1*).

The work is under the supervision of an architect for historical monuments (*actual plans presented.*)

Long-term projects:

Repair of cross vaults in the cloister, 36 in total

Sacristy building (Tranche 1)

- Restoration of the Matins winter room; floor, ceiling, woodwork, paintings.
- Restoration of the old movie theater of Mademoiselle Papillon

Abbey Church

- consolidation works masonry, structural inspection
- Purchase of stolen paintings, installing Louis XV chandeliers (stolen)
- Refurbishments of the Count and Countess of Ponthieu cenotaphs.

Main building - East side:

- Consolidation of the masonry



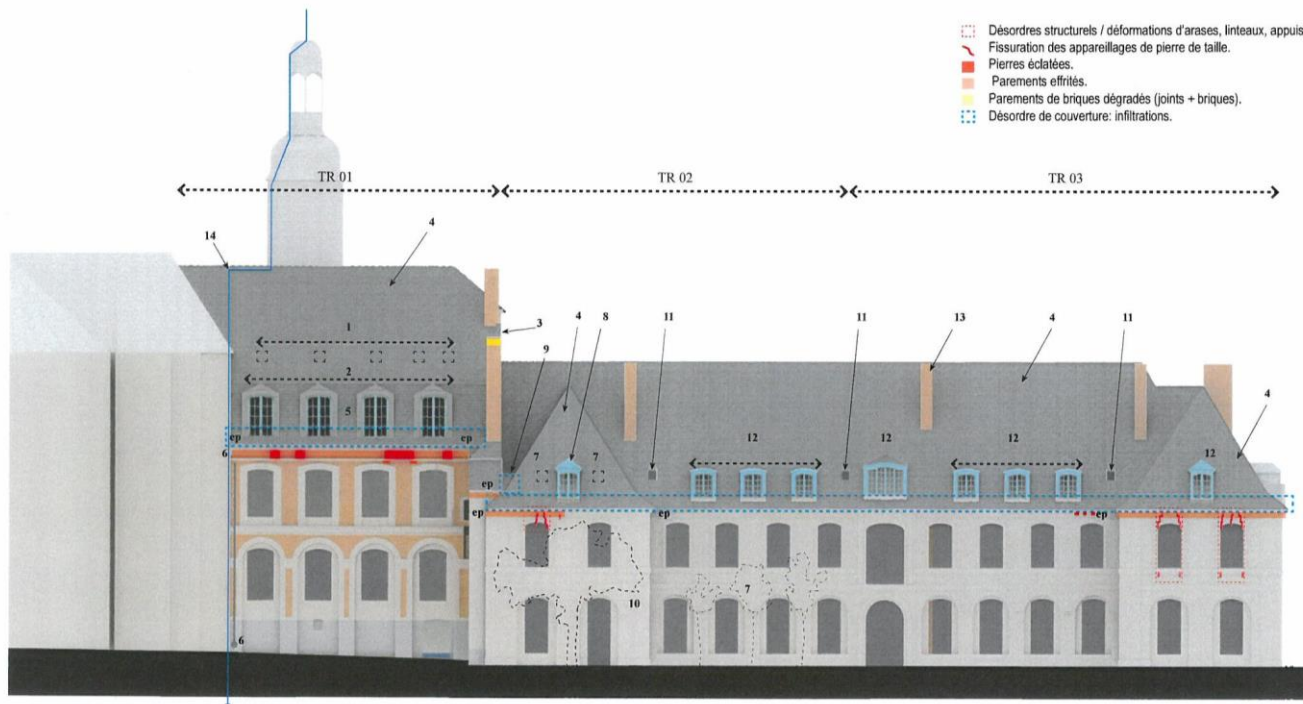
Winter room for matins



Cenotaph with the recumbent effigy of Simon de Dammartin, Count of Ponthieu.



Cloister with cross vaults



Provisional Budget Roofing East Front.

The restoration campaign is projected for 3 years 2014/2015/2016.
The total amount reaches 1,216,698€ (2010 prices) for the sole eastern side of the facade.

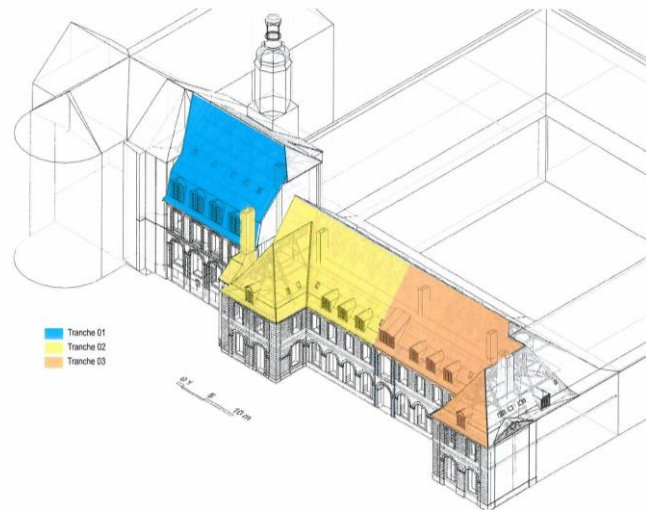
costs:

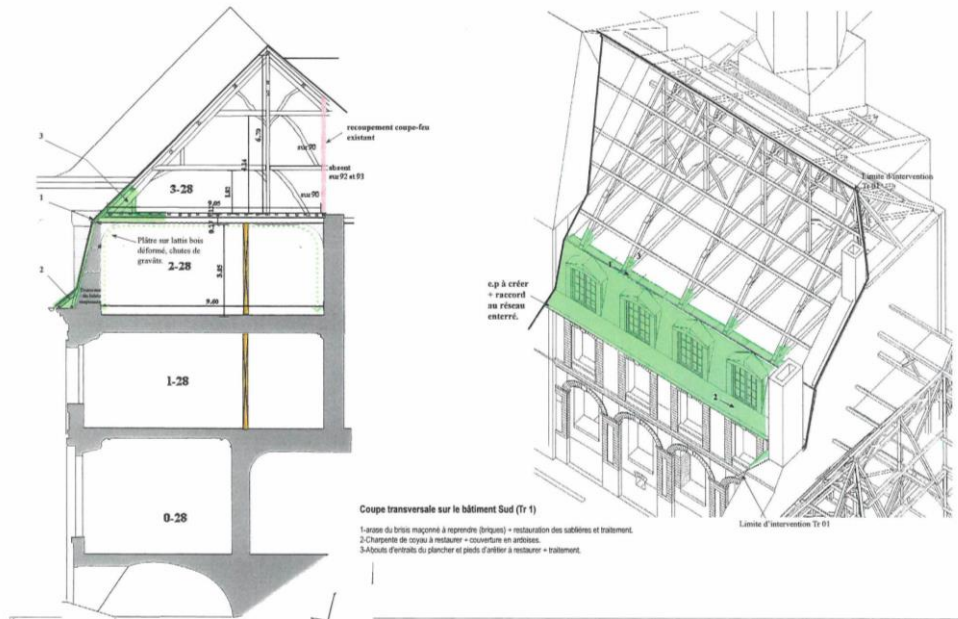
Tranche 01 = € 423,809 (blue)

Tranche 02 = € 390,643 (yellow)

Tranche 03 = € 402,246 (orange)

Note: drawings, sketches from the record of the architect in charge of the project.





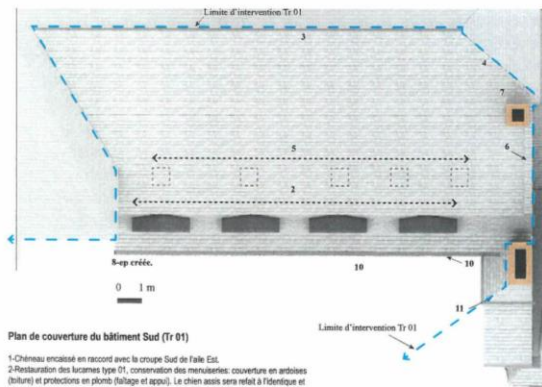
Work planned on Tranche 1:

Cross section of the South Building

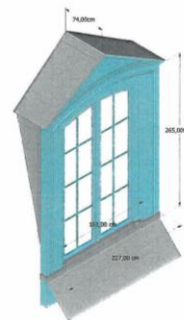
1. Level the lower slope to resume (brick) + restoration of sand and treatments (green)
2. Step lap rafter beams to be restored + slate roofing
3. Restoration & replacement of the floor tie-beams

Coverage Plan South Building

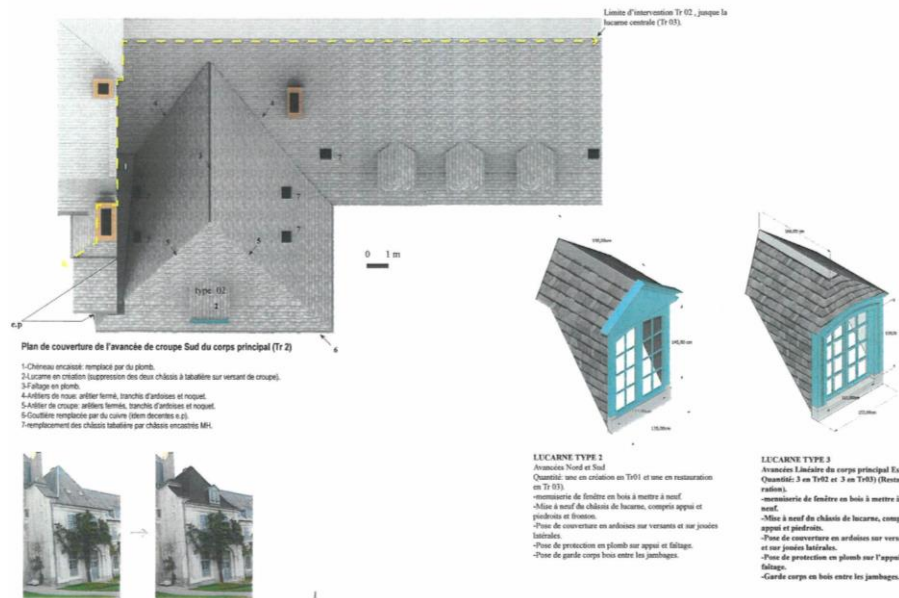
1. Restauration of the dormer windows (4)
2. Lead ridge
3. Taking down the frame of the roof, dormer window
4. Refection of the slate wall covering
5. Replacement of the zinc gutter with copper



- Plan de couverture du bâtiment Sud (Tr 01)**
- 1-Château encasé en raccord avec la croupe Sud de Halle Est.
 - 2-Restauration des lucarnes type 01, conservation des menuiseries; couverture en ardoises (boiture) et protections en plomb (fallage et appui). Le chien assis sera refait à l'identique et mis en peinture.
 - 3-Fallage en plomb.
 - 4-Arrière de croupe fermée; ardoises en tranchis et noquet.
 - 5-Chape sans refector des chaises à latelière du comble.
 - 6-Réfection couche mur en ardoises.
 - 7-Réfection solin de cheminée (besace).
 - 8-Création d'une descente EP en cuivre supplémentaire à raccorder au réseau.
 - 9-Suppression de la descente EP dans l'angle du comble.
 - 10-remplacement de la gouttière en zinc par du cuivre.
 - 11-reflection des couvertures en ardoises des plans de contrefort + gouttière et descente EP en cuivre.



- LUCARNE TYPE 1**
Bâtiment Sud
- Quantité: 4
- menuiserie de fenêtre récente à conserver.
 - Mur à neuf du châssis de lucarne, compris appui et piedroits et mouches.
 - Pose de couverture en plomb sur toiture, fallage, frotton, appui et jointes.
 - châssis en bois apparent à peindre.



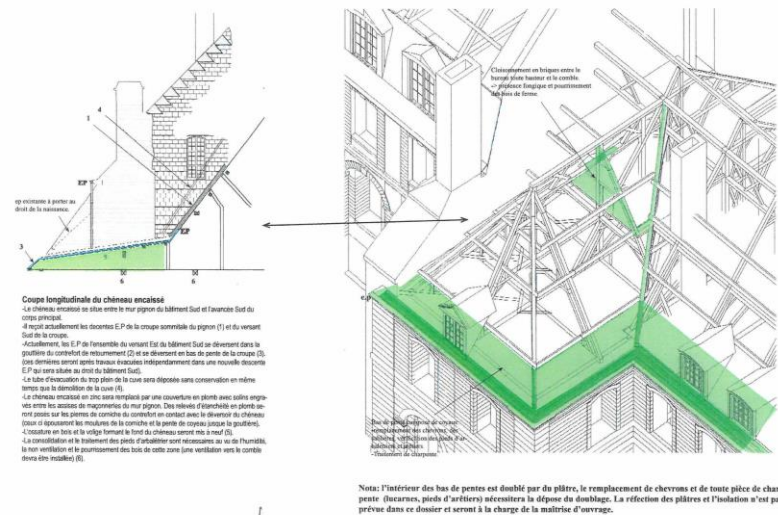
Work planned on Tranche 2:

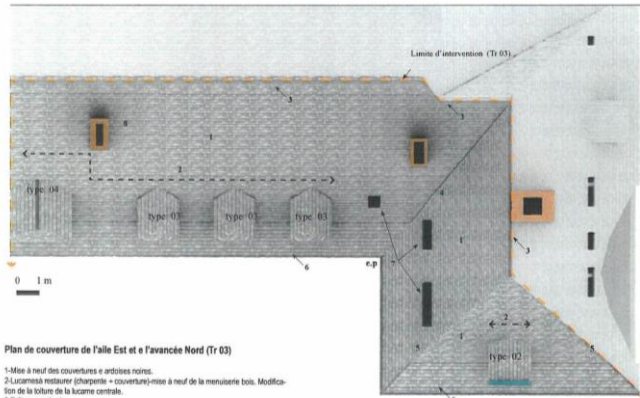
Plan coverage of advanced hip South of the main body

1. Creation of a skylight frame and deletion of the two dormer windows
2. Lead ridge
3. Zinc gutter, replaced by copper
4. replacement of dormer frame by historical built-in units

Longitudinal section of the embedded gutter (green)

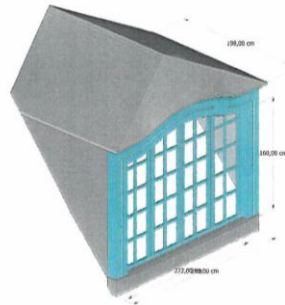
1. The embedded zinc gutter will be replaced by a lead roof with rakes engraved between the basis of the masonry gable wall.
2. Replacement of rafters, dormers, hips,
3. Work on rainwater (EP) falls, gutters,
4. Wooden floor system and batten for the gutter will be totally replaced.





Plan de couverture de l'aile Est et e l'avancée Nord (Tr 03)

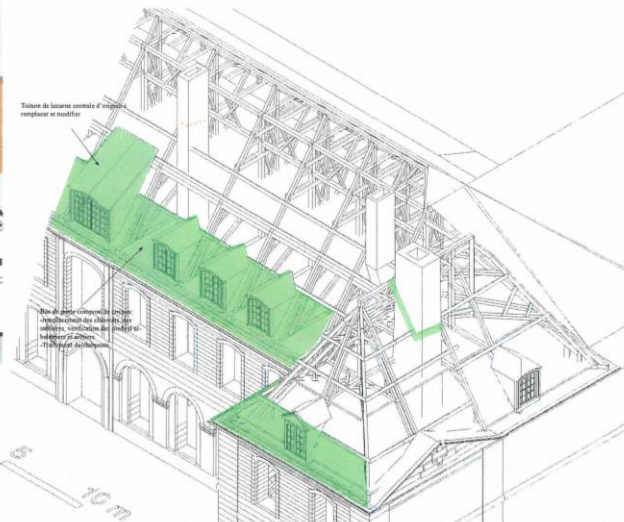
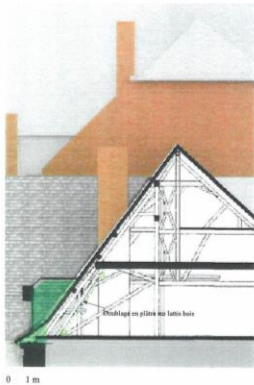
- 1-Mise à neuf des couvertures e ardoises noires.
- 2-Lucarnes restaurer (charpente + couverture)-mise à neuf de la menuiserie bois. Modification de la toiture de la lucarne centrale.
- 3-Faluge en plomb.
- 4-Affûter de roue arrier fermé, tranchis d'ardoises et noquet.
- 5-Affûter de coupe arrier fermé, tranchis d'ardoises et noquet.
- 6-Coutûtre remplacée par du cuivre (idem décrites e.2).
- 7-remplacement des châssis tabatière par châssis encastrés MH de dimensions identiques à l'existant.
- 8-Mhausser de la cheminée en maçonnerie de briques.



LUCARNE TYPE 4

- Corps principal Est, lucarne centrale.
- Quantité : 1 (Restauration).
- menuiserie de fenetre en bois à mettre à neuf.
- Mise à neuf du châssis de lucarne, compris appui et piedroits. Modification de la toiture.
- Pose de couverture en plomb sur versant et sur jaunes latérales.
- Pose de protection en plomb sur l'appui et faluge.
- Garde corps en bois entre les jambages.

11



Nota: l'intérieur des bas de pentes est doublé par du plâtre, le remplacement de chevrons et de toute pièce de charpente (lucarnes, pieds d'arrières) nécessitera la dépose du doublage. La réfection des plâtres et l'isolation n'est pas prévue dans ce dossier et sera à la charge de la maîtrise d'ouvrage.

Work planned on Tranche 3:
 Map coverage of the east wing and the North overhang

- 1.Complete restoration of the roofing with black slates.
- 2.Dormer restoration
- 3.Raising the chimney brickwork

Longitudinal section of the embeded gutter (green)

1. The embeded zinc gutter will be replaced by a lead roof with rakes engraved between the basis of the masonry gable wall.
- 2.Replacement of rafters, dormers, hips,
- 3.Roofing: central skylight replaced and modified.



Front view from the gardens of the East facade

Endowment ‘Abbaye de Valloires’

The Association de Valloires created the endowment in September 2012. The sole purpose is to raise funds for the maintenance of the heritage of the abbey, ie: paintings, sculptures, roof, stones, church, stolen objects from different wars,...

Why?.

Each penny ‘granted’ enables the Association de Valloires to offer complementary education for the children.

Thus, we are able to conduct different projects that are not necessary financed by the French state. By maintaining and preserving such a historical monument, children can develop a new approach to the french history, to religion, to a community,...

It is of most importance for the Association de Valloires to offer different alternatives of education.

But first and foremost, maintenance has to be done on the abbey.

Association de Valloires

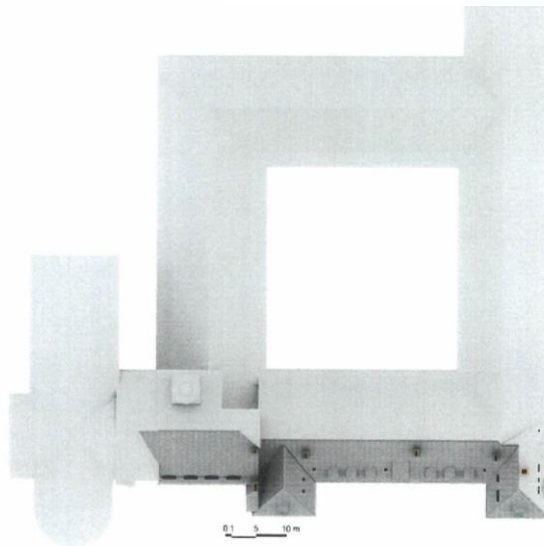
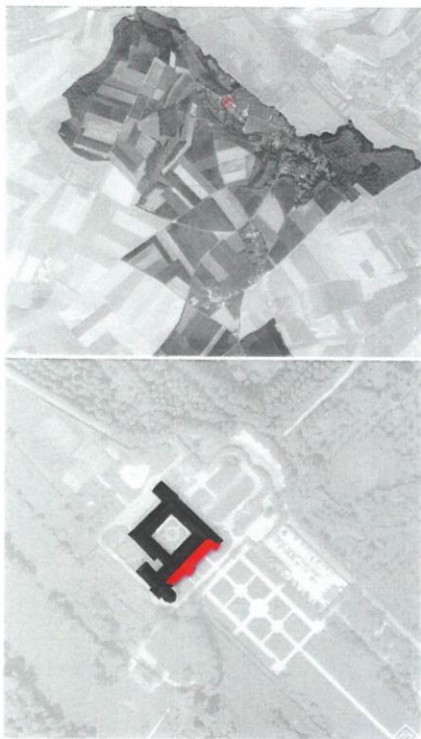
Team

Nearly 250 people are working to deliver day to day care for the children and the elderly :

- 50% educators
- 4% teachers
- 12% maintenance
- 8% administration - management
- 3% doctors, psychiatrics, psychologist
- 23% for the services of the elderly



18th century organ where the late Marie-Claire ALAIN, and Jehan ALAIN have performed.



Top view of Abbaye de Valloires , in red east roofing to be replaced

Association de Valloires

Association de Valloires is a non-profit organization. Its main goal as stipulated by Thérèse Papillon in 1922 is to fight social evil. Thus, the association fosters children within the abbey.

Children come from different social life:

- When children are remanded by a court
- When children have very complex needs and/or challenging behavior

For each child, the association de Valloires receives a daily allowance rate. The latter must cover food, lodging, social care, school, educators, transport and all relevant staff.

When it comes to financial figures, there is very little left for the preservation of the abbey, a historical monument since 1907.

The Abbey de Valloires has nearly 6 000m² of premises to be maintained, heated and followed up. When we invest, the French state grants the association up to 40% of the cost as far as it is a historical monument. So all amenities, electricity, heating; painting,... is a non-deductible cost for us.

One can easily understand that for major investments, the association does not have the necessary funds to undertake such challenges.

The association has developed a commercial aspect in terms of visits (38,000 /year), and lodging where tourists can stay in beautiful 18th century suites (monks rooms)

The money saved through charity donation is a must to maintain and preserve a historical monument for the children aged 3 months to 12 years!



High altar with stalls



Suites and salons in 1901



18th century Hotel suites



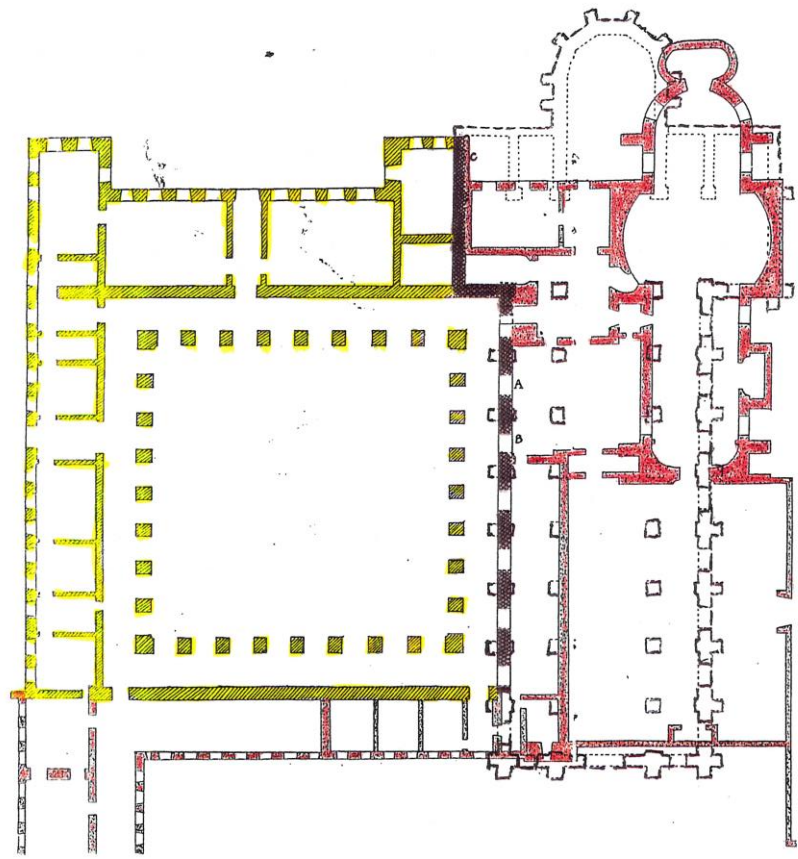
Matins stairway



Eucharistic crosier



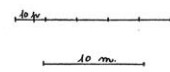
Ironwork for the rood screen

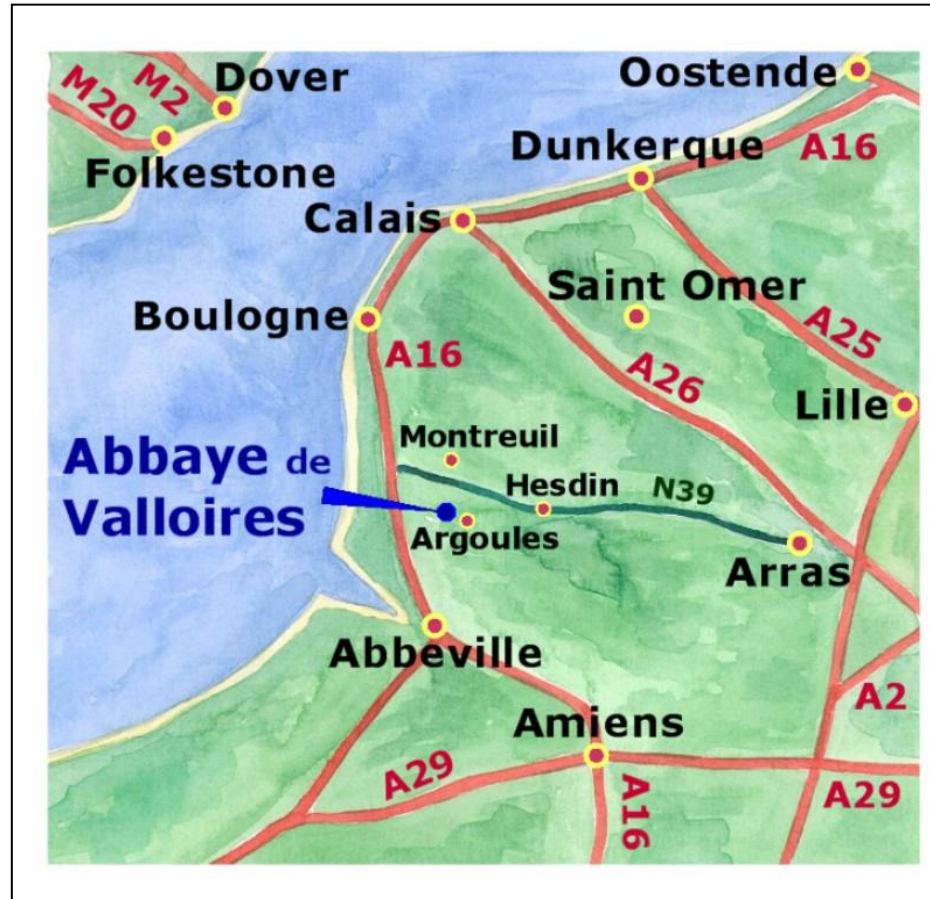


Abbaye de Valloires

d'après un relevé d'architecture de 1925

- avant 1684
parties comprises de l'an-
cienne église abbatiale.
- ▨ entre 1684 et 1735
(probablement entre 1684 et 1710)
- après 1735





The abbey de Valloires is located 275 km North of Paris and 45 km South Le Touquet

